

SINGLE ANCHOR POINTS ON TRAPEZOIDAL COLD ROOF

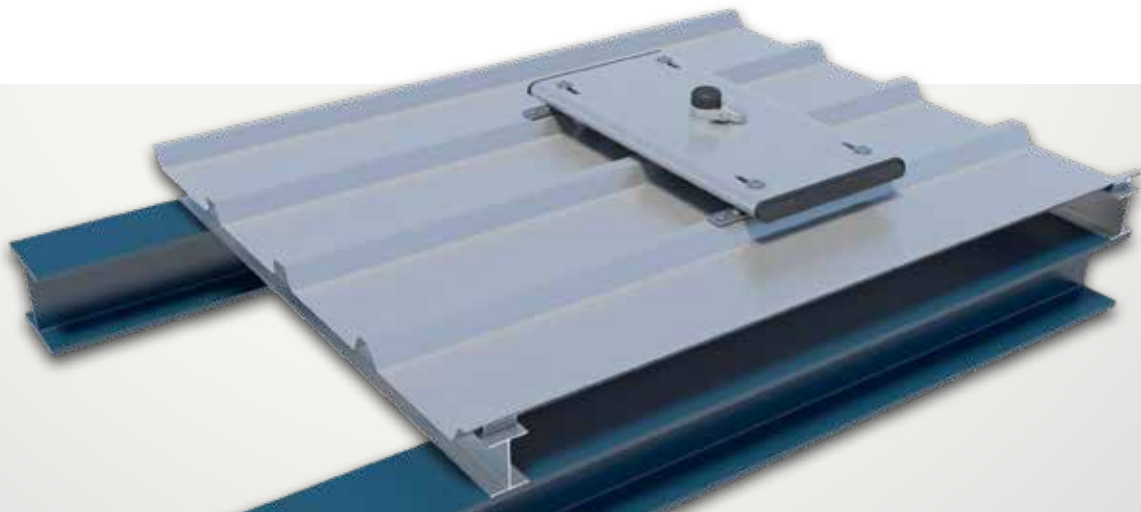
RAP GLOBE

RAP GLOBE SINGLE ANCHOR POINTS ARE PERMANENT ANCHORS FOR FALL PROTECTION INSTALLED ON THE SURFACE OF A STRUCTURE. THE ANCHOR POINTS ARE SUITABLE FOR ONE USER AT A TIME. THE USER IS SECURED DIRECTLY TO THE 360° ROTATING SAFETY EYE OF THE ANCHOR POINT ITSELF.

Installation

RAP Globe anchor points are installed to steel trapezoidal cold roof plates, with a minimum thickness of 0,63 mm (24 gauge), by means of the AISI 316 XTrusion base plate. Installation occurs with four aluminum round seam clamps per base plate. The use of this clamping method to install anchor points minimizes the chance of damages and leakages.

All XSPlatforms single anchor point systems are designed, tested and certified in accordance to the latest European standards EN 795:2012 type A.



SPECIFICATIONS

- › Steel trapezoidal cold roof plates
- › Min. thickness of 0,63 mm (24 gauge)
- › Clamping installation method
- › Max. roof pitch of 10°
- › Anchorage eye with 360° rotation
- › Suitable for 1 user
- › Suitable for both fall arrest and fall restraint
- › Durable stainless steel components
- › EN 795:2012 type A

